

KEYNOTES:

*All keynotes may not apply.
(X-X) KEYNOTE TYPE

ACCESSORIES

- A-1 EXTERIOR IMPACT RESISTANT STOREFRONT, SEE SCHEDULE
A-2 EXTERIOR IMPACT RESISTANT WINDOW, SEE SCHEDULE
A-3 EXTERIOR IMPACT RESISTANT STOREFRONT W/DOUBLE DOOR, SEE SCHEDULE
A-4 EXTERIOR IMPACT DOOR, SEE SCHEDULE
A-5 DUMPSTER ENCLOSURE, SEE SITE PLAN DETAIL 5/SP-2
A-6 BACKFLOW PREVENTER, SEE CIVIL DWGS FOR DETAILS
A-7 HEAVY DUTY BKE RACK (16 BKEs) INGROUND MOUNT POWDER COATED W/GROUT COVER
A-8 RECEPTION FRONT DESK COUNTER WITH PULL-OUT ADA LEDGE 34" HG. SEE DETAIL
A-9 ELECTRIC FIRE PLACE WITH 65" TV ABOVE
A-10 42" HEIGHT BAR TABLE WITH 12" DEEP WOOD COUNTERTOP FINISH SELECTED BY ID AND 84" ALUMINUM COLUMN POST
A-11 VENDING MACHINE BY OTHERS, SUBMIT SHOP DRAWINGS
A-12 NEW H-L-W REFRIGERATED ADA DRINKING FOUNTAIN WITH BOTTLE FILLING STATION BY ELKAY OR SIMILAR
A-13 LINE OF DROPPED CEILING ABOVE, SEE RCP PLANS
A-14 LINE INDICATES HEADER ABOVE, SEE RCP PLANS
A-15 LINE OF ROOF ABOVE
A-16 BUILT-IN MILLWORK TOWEL BIN STORAGE/TOWEL DROP CABINET, SUBMIT SHOP DRAWINGS
A-17 34" MAX. HEIGHT VANITY ENGINEERING STONE TOP WITH UNDERMOUNT SINK BUILT-IN MILLWORK BELOW, SEE I.D. PLANS FOR FINISHES.
A-18 ADA COMPLIANT VESSEL SINK BELOW COUNTER.
A-19 NEW MIRROR TO BE AT 40" MAX TO THE BOTTOM OF REFLECTIVE AREA, PROVIDE BACKING AS NECESSARY. SEE I.D. PLANS FOR FINISH AND SELECTIONS.
A-20 STALL COMPOSITE PARTITION, SEE FINISH SCHEDULE/I.D. PLANS
A-21 TYPICAL ACCESSIBLE GRAB BARS COMPLYING WITH ADA FBC 2023.
(WALL MOUNT GRAB BARS SEE DETAILS)
A-22 WALL MOUNTED SHOWER HEAD
A-23 SHOWER CONTROLS
A-24 ADA ADJUSTABLE/DETACHABLE HAND HELD SHOWER HEAD
A-25 ADA SHOWER CONTROLS ABOVE GRAB BAR BUT NOT EXCEED 48" A.F.F.
A-26 ADA SHOWER SEAT
A-27 TEMPERED GLASS DOORS AND SHOWER ENCLOSURE
A-28 6" HG WOOD BASE, SEE DETAIL
A-29 SCHLUTER-SCHONE TILE TRANSITION STRIP OR SIM.
A-30 SCHLUTER-ROUNDEC EDGE PROTECTION FOR TILED EDGES AND OUTSIDE CORNERS OF TILED SURFACE OR SIM.
A-31 FOAM PADDING TO BE SELECTED BY OWNER. INSTALLED BY CONTRACTOR
A-32 RETRACTABLE SUSPENDED NETTING TO BE SELECTED BY OWNER. INSTALLED BY CONTRACTOR

WALL FINISHES

- W-1 NEW 8" CONCRETE BLOCK WALL WITH 5/8" (2 COATS) CEMENTITIOUS FINISH (STUCCO). SEE WALL SCHEDULE FOR INTERIOR FINISHES.
W-2 STEEL RIGID FRAME STRUCTURE, SEE STRUCTURAL PLANS
W-3 STEEL COLUMN, SEE STRUCTURAL PLANS
W-4 EXTERIOR INSULATED METAL WALL PANEL WITH FLAT EXTERIOR PROFILE AND EMBOSSED STUCCO TEXTURE THAT MIMICS THE LOOK OF A MASONRY STUCCO, SECURED IN BETWEEN INTERIOR FRAMING. SUBMIT SHOP DWGS.
W-5 INTERIOR PARTITION WITH ACOUSTICAL INSULATION WHERE IS NOTED, NON LOAD BEARING METAL STUD INTERIOR FRAMING WITH 5/8" DRYWALL
W-6 PROVIDED 5" HEIGHT TILE FINISH ON 1/2" CEMENT BOARD AS TILE BAKER THEN GREEN BOARD ABOVE WITH LATEX PAINT ABOVE ON GALV. STEEL STUD (25GA). DO NOT APPLY TILE BEHIND LOOKERS WHERE APPLIED
W-7 PROVIDE CERAMIC TILE ON 1/2" CEMENT BOARD WITH SHOWER LINER ON GALV. STEEL STUD (22 GA) (SEE DETAIL 7/A5.0 FOR WATERPROOFING)
W-8 5/8" G.W.B. ON 1 1/2" MET. FURRING (22 GA) AT 16" O.C. WITH R-5 RIGID INSULATION ON BLOCK, SEE WALL SCHEDULE FOR INTERIOR FINISHES.
W-9 PROVIDE OPENING PENETRATION 24"x48" FOR R.A.G. SEE MEP'S DWGS.
W-10 PROVIDE OPENING PENETRATION 32"x18" FOR SUPPLY AC, SEE MEP'S DWGS.
W-11 PROVIDE REMOVABLE SPRANDREL WALL PANEL BEHIND WINDOW WHERE IS NOTED. SEE ARCH. DETAIL 1A/A6.0 AND 1B/A6.0

CEILING

- CLG-1 EXPOSED STRUCTURE ABOVE TO BE PAINTED WHITE COLOR
CLG-2 2x2 ACOUSTICAL SUSPENDED CEILING TILE
CLG-3 1 LAYER OF 5/8" FINISH GYP BOARD ATTACHED TO STUD OR JOIST MEMBER AS REQUIRED. SEE SCHEDULE
CLG-4 1 LAYER OF 5/8" FINISH MOISTURE GYP BOARD ATTACHED TO STUD OR JOIST MEMBER AS REQUIRED
CLG-5 TENNIS COURT LIGHTING (SEE RCP A2.11 FOR DETAILS)
CLG-6 ENERGY SAVER INSULATION SYSTEM

FOUNDATION / FLOOR SYSTEM

- F-1 HARD COURT SURFACE COVERED WITH ACRYLIC RESINS TO SEAL THE SURFACE AND MARK PLAYING LINES "BY OTHERS" OVER 5" THICK CONCRETE SLAB ON WELL COMPACTED TERMITES TREATED SOIL, SEE SPECS
F-2 NEW 8" THICK CONCRETE SLAB ON WELL COMPACTED TERMITES TREATED SOIL, SEE STRUCTURAL FOR DETAILS
F-3 NEW CONCRETE SIDEWALK POURED-IN PLACE WITH CROSS SLOPE <1:50
F-4 2" RECESSED CONCRETE SLAB
F-5 5/8" SLAB FLOOR RECESS, VERIFY FINAL FLOOR FINISH AND PROVIDE FLUSH FINISH FLOOR FROM CLUBHOUSE TO TENNIS COURT

ROOF

- RF-1 TPO ROOFING SYSTEM ON ISO INSULATION ON METL DECK AND METAL JOISTS, SUBMIT SHOP DRAWINGS.
RF-2 WHITE STANDING SEAM METAL ROOFING PANEL OVER STEEL RIGID FRAME STRUCTURE WITH DOUBLE LAYER UNFACED INSULATION BLANKETS OVER ENERGY SAVER FABRIC INSTALLED WITH A NETWORK OF STEEL BANDING, SUBMIT SHOP DWGS
RF-2.1 WHITE ENERGY SAVER FABRIC INSTALLED WITH A NETWORK OF STEEL BANDING AND DOUBLE LAYER UNFACED INSULATION BLANKETS BETWEEN PURLINS
RF-3 ROOF DRAIN, SEE MEP DWGS
RF-4 ROOF OVERFLOW SCUPPER, SEE MEP DWGS
RF-5 RAIN WATER LEADER, SEE MEP DWGS FOR SIZE AND CONNECTIONS
RF-6 6"x8" ALUMINUM GUTTER, TYP.
RF-7 ALUMINUM DOWNSPOUT

MECHANICAL / ELECTRICAL / PLUMBING

- MEP-1 ELECTRIC METER
MEP-2 ELECTRICAL PANEL
MEP-3 CONDENSING UNITS SEATING ON 18" HG. METAL STANDS, SEE MEP DWGS
MEP-4 RTU UNITS SITTING ON CONCRETE SLAB WITH SCREEN GREEN VEGETATION 3" HIGH MINIMUM, SEE MEP AND LANDSCAPE DWGS
MEP-5 FLOOR DRAIN
MEP-6 FREE STANDING MOP SINK
MEP-7 EXPOSED INDOOR ROUND DUCTWORK, SEE MEP'S DWGS FOR SIZE AND SPECS.
MEP-8 WATER HEATER ABOVE, 7" MINIMUM CLEARANCE ABOVE FROM FLOOR TO PLATFORM. SEE MEP'S DWGS FOR SIZE AND SPECS.

FINISH LEGEND

	FF-XX FLOOR	WF-XX WALL
	BF-XX BASE	CF-XX CEILING
FLOOR:		
CONCRETE FLOOR WITH BROOM FINISH	FF-1	WF-1
DAL TILE 24x24 MATTE PORCELAIN IRONCRAFT CHARCOAL GREY IC13	FF-2	WF-2
DAL TILE 4x12 MOSAICS PENNY ROUND MOSAICS BLACK D31	FF-3	WF-3
INDOOR TENNIS COURT EXPOSED STRUCTURE WITH ENERGY SAVER FABRIC	FF-4	WF-4
ACCENT LOBBY WALL WOOD PANELS RICHLEU LE-3771#339 DELPHI OAK BENJAMIN MOORE ACCENT PAINT TBD	FF-5	WF-5
UNFINISHED CONC.		WF-6
BASEL:		
6" WOOD BASE	BF-1	CF-1
6" PORCELAIN TILE	BF-2	CF-2
6" RUBBER COVE BASE	BF-3	CF-3
NONE	BF-4	CF-4

- ALTERNATES ALLOWED, MUST BE SUBMITTED FOR APPROVAL BY ARCHITECT, ID, AND OWNER PRIOR TO PROCUREMENT
- ALL FINISHES TO BE APPROVED BY OWNER PRIOR TO PROCUREMENT AND INSTALLATION
- COLORS AND TYPE TO BE DETERMINED AND SELECTED BY OWNER

PLAN LEGEND

	NEW EXTERIOR CMU WALL		DOOR TYPE
	NEW EXTERIOR WOOD FRAMED WALL		KEYNOTES
	NEW INTERIOR FRAMING		WINDOW TYPE TAG
	NEW INTERIOR FRAMING TO BE SOUND INSULATED		WALL TYPE
	NEW COLUMN		PORTABLE FIRE EXTINGUISHER TYPE 2A 10BC, WITH CURRENT SERVICE TAGS. "LARSOM" SEMI-RECESSED ALUM. CABINET, OR APPROVED EQUAL. ALT: WALL HUNG F.E. NO CABINET AS LOCATIONS SELECTED BY OWNER

- NOTES:
• ALL CASEWORK / MILLWORK DENOTED IS GENERAL IN SCOPE AND DESIGN. SUBCONTRACTOR IS TO PROVIDE DETAILED SHOP DRAWINGS FOR APPROVAL BY OWNER AND ARCHITECT PRIOR TO PROCUREMENT AND INSTALLATION
• CONTRACTOR TO VERIFY ALL FINISHES AND COLORS WITH OWNER, PRIOR TO PROCUREMENT AND APPLICATION
• TYPICAL DIMENSIONS ARE NOMINAL. HOLD CLEAR DIMENSIONS ONLY WHERE INDICATED
• CONTRACTORS TO VIF (VERIFY IN FIELD) ALL EXISTING DIMENSIONS AND COLUMN LINES PRIOR TO WORK, IF PROVIDED BLOCKING IN WALL AS REQUIRED
• VERIFY ALL DIMENSIONS IN FIELD AND REPORT DISCREPANCIES OUTLET LOCATIONS HAVE BEEN SHOWN FOR COORDINATION ONLY. ELECTRICAL PLANS SUPERSEDES ARCHITECTURAL. ALL OUTLETS LOCATIONS TO BE CONFIRMED BY OWNER
• PROVIDE A VINY. REDUCER AT ALL THRESHOLDS AND AT ADJOINING DISSIMILAR FLOOR MATERIALS. PROVIDE A FLARED TILE REDUCER AT TILED THRESHOLDS. ALL CHANGES IN ELEVATION OR THRESHOLDS SHALL BE 1/4" OR 1/2" WHERE A FLARED THRESHOLD EXISTS.

REVISIONS

1. DRC COMMENTS	09.27.23
2. DRC COMMENTS	12.08.23
3. DRC COMMENTS	08.21.24
4.	
5.	
6.	
7.	
8.	
9.	
10.	

ALL IDEAS, DESIGN, ARRANGEMENTS, AND PLANS INDICATED OR REPRESENTED BY THIS DRAWING ARE OWNED BY AND PROPERTY OF RPB ARCHITECT, AND WHILE CREATED, ENVELOPED, AND DEVELOPED FOR USE, AND IN CONNECTION WITH THE SPECIFIED PROJECT, NONE OF SUCH IDEAS, DESIGN, ARRANGEMENTS, AND PLANS SHALL BE USED BY, OR DISCLOSED TO ANY PERSON, FIRM, OR CORPORATION FOR ANY PURPOSE WITHOUT WRITTEN PERMISSION OF RPB LINARES ARCHITECTURE, INC.

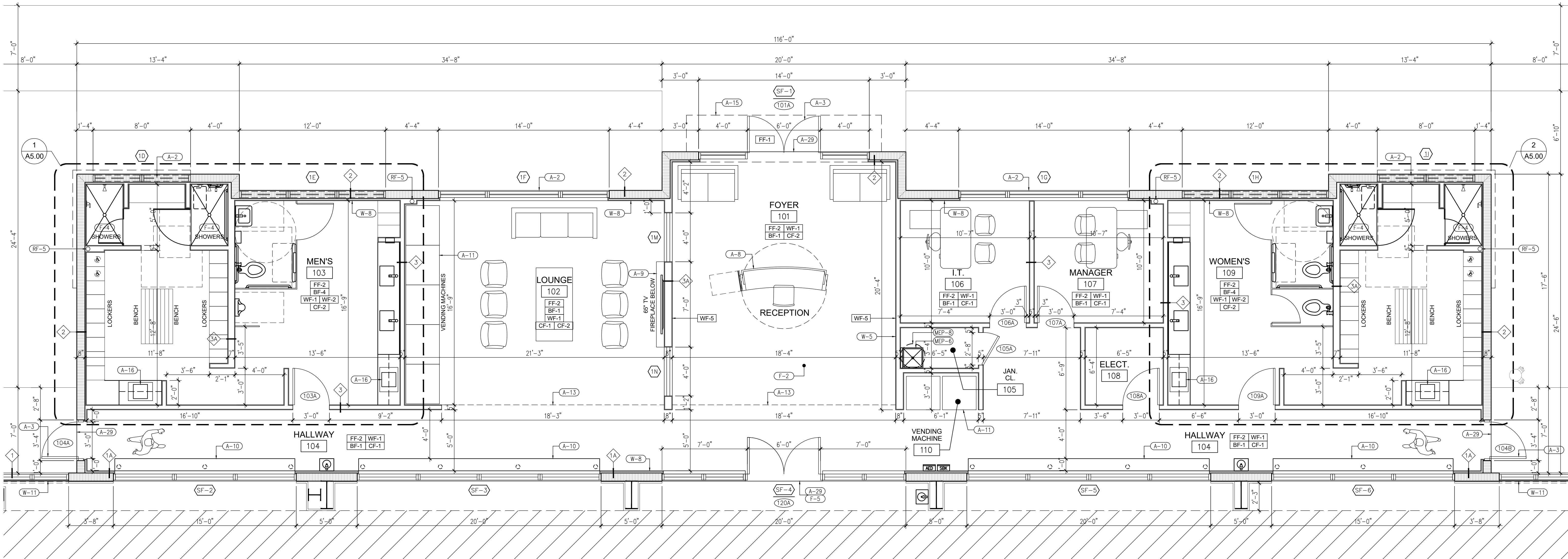
FLORIDA INDOOR TENNIS
POMPAHO BEACH, FL 33069

3000 NORTH MILITARY TRAIL, SUITE 209
BOCA RATON, FLORIDA 33431
PHONE 561-391-0081 FAX 561-391-0085
EMAIL mail@rwb-arch.com

RWB
Linare's
ARCHITECTURE

PROJECT # 21-035
DATE PER ISSUANCE
SHEET #

A2.03
JUAN C. LINARES



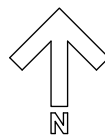
ENCLOSED
TENNIS COURTS

120
FF-4 | WF-4
BF-4 | CF-4

F-1

ENLARGED CLUBHOUSE FLOOR PLAN

SCALE: 1/4"=1'-0"



P&Z

PZ23-12000009

03/05/2025

A26000640